

TRAKMAT® Connector Installation Guide

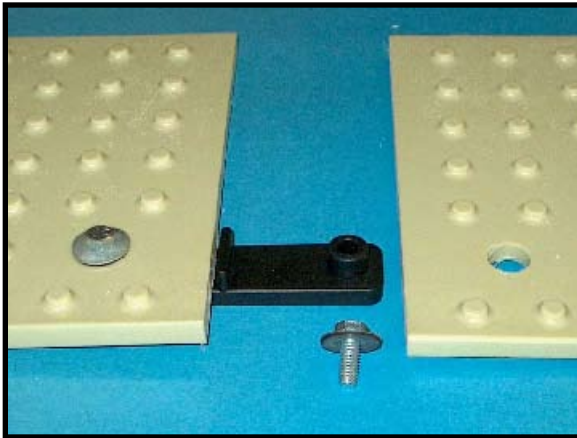
Tools Required: None.



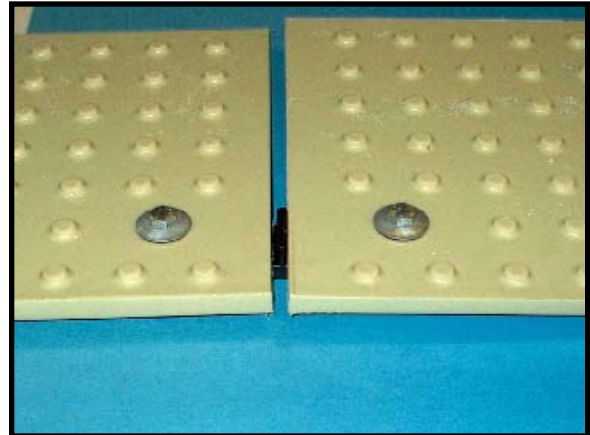
Step 1: Each connector set includes;
1 — 2 Nut Single Connector Plate
2 — Flat washers & 2 — Bolts



Step 2: Slide Connector Plate with imbedded nuts up through connector hole in mat.



Step 3: Place bolt with flat washer into fixture with imbedded nut.

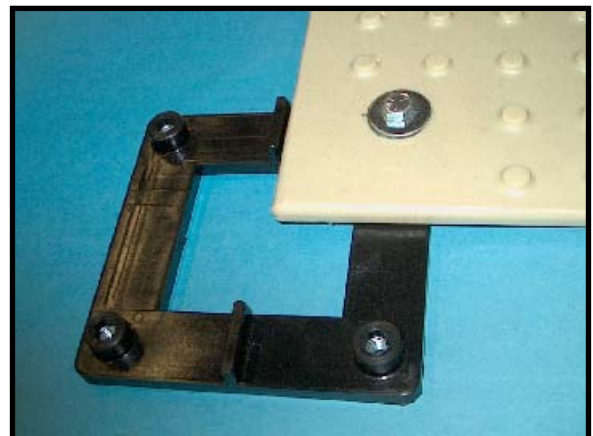


Step 4: Place second bolt and washer into fixture and Hand tighten bolt .
Hand Tighten only Do Not Use Tools.

Quad — 4 Mat Connectors

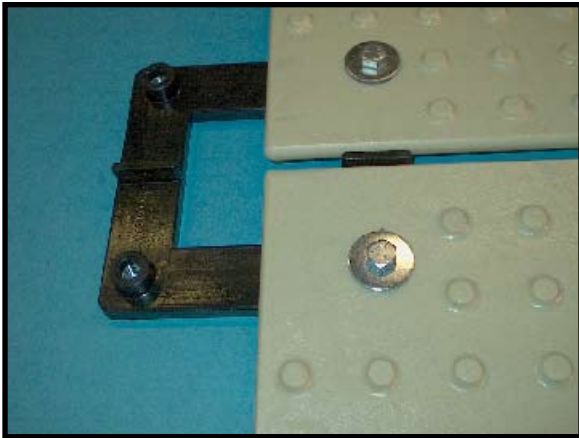


Step 1: Each connector set includes;
1 — 4 Nut Single Connector Plate
4 — Flat washers & 4 — Bolts

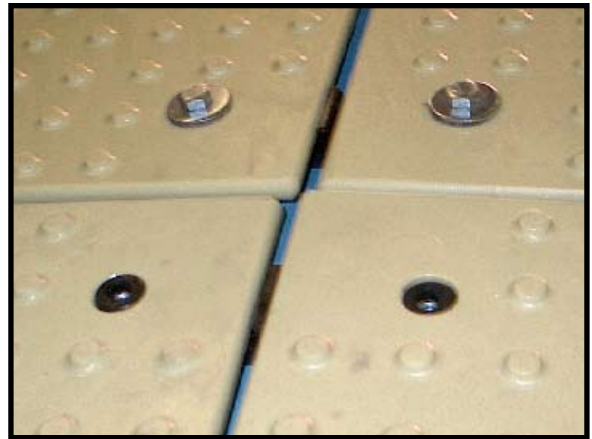


Step 2: Install one corner sliding fixture under mat. Place bolt with washer into fixture .
Hand Tighten only Do Not Use Tools

Quad Connector Con't



Step 3: Slide second mat on to fixture and install bolt.
Hand Tighten only Do Not Use Tools



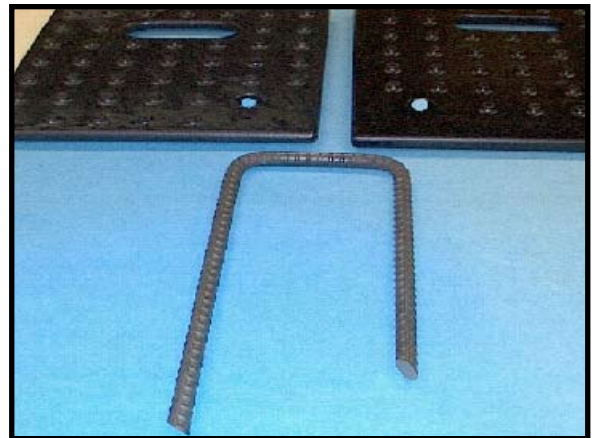
Step 4: Complete installation of remaining mats following same procedure as Step 3.
Hand Tighten only Do Not Use Tools

Ground Stake Fixture Installation

Tools Required: Sledge Hammer



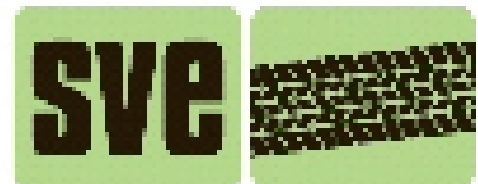
Step 1: 1 — U shaped ground stake.



Step 2: Line up stake with holes in mats.



Step 3: Place stake through holes and pound into soil using Sledge Hammer.



FOR MORE SECURITY SYSTEMS, INC.

1-800-762-8267